



BUILDING A LEGACY FOR OUR FUTURE



BASED IN FAITH

A shared faith in Christ as our one true Savior; that is what unites us as followers of Christ.



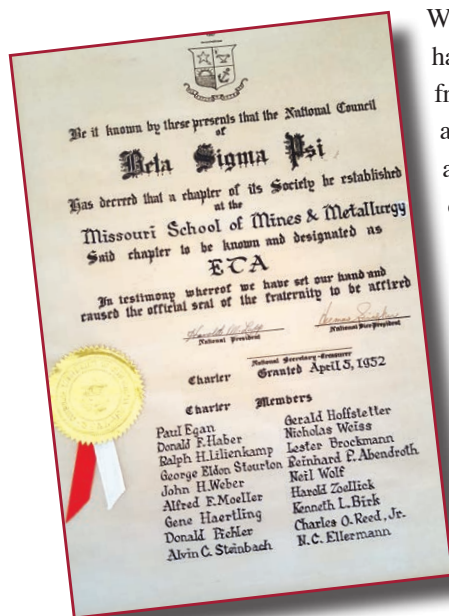
OUR LEGACY

For 65 years, the Eta Chapter of Beta Sigma Psi has been a home and gathering place for young men with a shared faith in Christ at Missouri School of Mines, the University of Missouri-Rolla, and Missouri University of Science and Technology. Our roots on campus date back to our early beginnings in the 1940s as the Gamma Delta Association, followed shortly afterward by our founding on April 5, 1952, as Eta Chapter of Beta Sigma Psi National Lutheran Fraternity. Over the decades, we have continued to set ourselves apart from other fraternities on campus with our aim to develop well-rounded, Christian gentlemen.

Beta Sigma Psi provides an environment where young men are challenged to excel in and out of the classroom. Built on our core values of spiritual, scholastic, and social excellence, our members are taught the importance of teamwork, organizational skills, time management, and leading by example. Our Fraternity is often the first place collegiate men get the chance to practice and apply these practical life skills to accomplish tasks, contribute to their community, and better themselves.

With more than 720 initiates, Eta Chapter has built a legacy that has influenced the lives of numerous men, cultivating lifelong friendships in the process. Our alumni have gone on to successful and distinguished careers in business, engineering, technology, and countless other endeavors, often becoming leaders in their church, community, and industry. Most of us can trace our own personal successes to the early training and development we received at Eta Chapter.

While there are some differences in today's Chapter compared to the one you knew, all Beta Sigma Psi alumni can be proud of the legacy we have helped create and the quality of our Chapter that carries on to date. The common bond of our brotherhood, along with our shared faith, principles, and values, remain strong. We ask you to carefully consider the following pages, which detail our need now to build a legacy for the future of Eta Chapter.



209 West 9th Street – 1952



1311 State Street – 1960



2 Fraternity Drive – 2011

ETA CHAPTER



Graduation 2014



1st Place - 107th Best Ever St. Pat's



Beta Sig Highway Cleanup 2016

SPIRITUAL ENDEAVORS

- Beta Sig Sunday – Members attend the local Lutheran Church each month and serve as greeters, scripture readers, and ushers
- Upperclassmen host weekly bible studies in the great room
- Members are involved with other campus organizations, including the Lutheran Student Fellowship, Christian Campus Fellowship, and Greek Bible Study
- The local Lutheran pastor serves as the pastoral advisor for the Chapter and attends weekly chapter meetings
- New members are taught the history of the Lutheran Church, the Reformation, and what it means to be a Lutheran

PHILANTHROPIC, SERVICE, AND MISSION INITIATIVES

- Infinite Tacos – All-you-can-eat taco fundraiser hosted by the Chapter at Immanuel Lutheran Church with all proceeds donated to Lutheran Children and Family Services
- Ragin Cajun – All-you-can-eat Cajun food fundraiser hosted by the Chapter at the chapter house with all proceeds donated to Immanuel Lutheran Church
- Christmas for the Kids – An event where children from Immanuel Lutheran Church come to the chapter house for crafts with the actives
- Heit's Point Lutheran Camp Service Trip – Brothers travel to Heit's Point, a Lutheran youth retreat camp, for a weekend of service and brotherhood
- Adopt-a-Highway – Eta Chapter sponsors a section of highway in Rolla and hosts a service event three times a year to pick up trash on along the highway
- Undergraduate members and alumni, in partnership with Amigos for Christ and other Beta Sig chapters, attend an international service trip to Chinandega, Nicaragua, to bring clean water to rural villages and help build a K-12 school

CAMPUS INVOLVEMENT

- 1st place St. Pat's float – 2016, 2012, 2011, 2010
- St. Pat's champions – 2015, 2011
- Executive officers attend the Beta Sigma Psi National Leadership Retreat in Denver, Colorado, where they connect with other Beta Sig chapters and sharpen their leadership and teamwork skills
- Continuing in our long-standing tradition of leadership on campus, Beta Sigs are active in a multitude of organizations

NEW MEMBER CLASS STATISTICS (FALL 2016)

- 3.66 high school GPA
- 28 average ACT score
- 4 Eagle Scouts
- All members were involved in at least two activities in high school (National Honor Society, athletics, band, Future Farmers of America, science club, etc.)

MEMBERSHIP (SPRING 2017)

- 49 total members
- Three new spring associate members
- Five members on co-operative internships
- One member studying abroad
- Cumulative 3.29 GPA

MISSOURI S&T

- One of America's top five "best value" public universities
- Third ranked engineering college (USA Today)
- Top ranked as Best Investment (Newsweek)

“ I did not live in the current house. I graduated in January of 1964. This Fraternity meant a lot to me while I was in school and helped me keep my faith. I am glad to see the Chapter's initiatives in service and their close relationship with the church. These things are important and must be kept in mind. - Wayne Scheer '60 2017 St. Pat's Alumni Meeting ”



OUR NEEDS

Built in 1967, 2 Fraternity Drive has been a part of Eta's legacy for 50 years and is showing its age. While Beta Sigma Psi continues to attract the top men at Missouri S&T, we know that we are losing potential members to other fraternities that offer better facilities. The chapter house is often the first impression of our fraternity for a potential recruit and his family, and certainly one they remember. It has become clear that we must make a major investment in our chapter house to continue to attract the quality and caliber of men that we desire and to deliver the best fraternal experience.

KEEPING OUR BROTHERS SAFE

The safety of our undergraduate members is of utmost importance to the Eta Chapter Alumni Board; we must offer a structurally sound and safe home for our undergraduates. Much like our personal homes, our chapter house must be a safe haven that instills confidence in our members and their parents. The renovation will address critical infrastructure needs for the facility and provide a comfortable living environment for our brothers.

PURSUING EXCELLENCE

Academics in Rolla have always been challenging. Recent rankings have placed Missouri University of Science and Technology as one of the top engineering colleges in the country on par with MIT, Harvard, and Stanford. Eta Chapter of Beta Sigma Psi has consistently ranked among the top fraternities on campus scholastically. There has never been a greater need for enhanced, quiet, well-lit, and comfortable study spaces within our facility for our members to study. We have all seen the impact of technology over the years. Personal computers, projectors, high-speed

internet access, e-mail, and more are now necessities for today's students. Our plan will ensure that Beta Sigma Psi has the resources to continue to excel academically and remain scholastic leaders on campus and within the Greek system.

SETTING OURSELVES APART

While Tau Kappa Epsilon is building a new facility at the old Delta Sigma Phi property next door on Fraternity Drive, nine other fraternities have undergone extensive renovations and expansions in recent years. In addition to the growth of the Greek community, the University has completed several large renovations, new residence halls, and off-campus apartments. While these groups move to offer luxury amenities to all students, our Fraternity still lacks necessities like central air conditioning. Our plan will ensure that our chapter house is able to meet the core needs of today's students without adding lavish amenities. When completed, our facility will set us apart from others by providing students with workspaces for chapter and class projects and common areas designed to encourage collaboration and learning.

ENABLING SOCIAL GROWTH AND RETENTION

We believe there is immense value in sharing a room with your brothers as we grow socially. We also know that upperclassmen desire more space in their rooms to spread out and study than we can currently offer them at Beta Sig. Therefore, our plan offers a mix of living arrangements with every student room having at least two occupants. The variety of layouts will allow us to accommodate members throughout their time in the Fraternity and is vital to attracting new members and retaining upperclassmen.



OUR PLAN FOR ETA CHAPTER

Our chapter house at 2 Fraternity Drive is the focus of undergraduate life and development at Beta Sigma Psi. It has been a home away from home for hundreds of young men and has played an essential role in the personal and professional development of our members. However, at 50 years in age, it can no longer meet the needs and requirements of today's student facilities. To maintain our strong presence on campus and ensure our legacy continues for generations to come, we must act.

Through careful study, assessment, and planning, the Rolla Alumni Chapter of Beta Sigma Psi, in coordination with undergraduate leadership, has developed a sound plan to address the long-term viability of Beta Sigma Psi on the Missouri University of Science and Technology campus. We seek to equip Beta Sigma Psi for success over the next 50 years. It has been determined that an expansion and complete renovation of the current chapter house is necessary, and that Eta Chapter must invest in our home to survive. Working with BMC Solutions, the Alumni Board has developed a tactical plan for our future.

All systems in the house have been evaluated and will be replaced as necessary. A renovation of the chapter house will maximize our investment by utilizing the existing sound structure while upgrading the infrastructure and furnishings for future students. A priority will be put on fire safety and significant infrastructure improvements. An addition to the current chapter house will enable us to attract and retain upperclassmen while providing necessary gathering spaces for chapter activities. Our plan will be executed in two phases to ensure limited disruption to the undergraduate members.

INFRASTRUCTURE IMPROVEMENTS

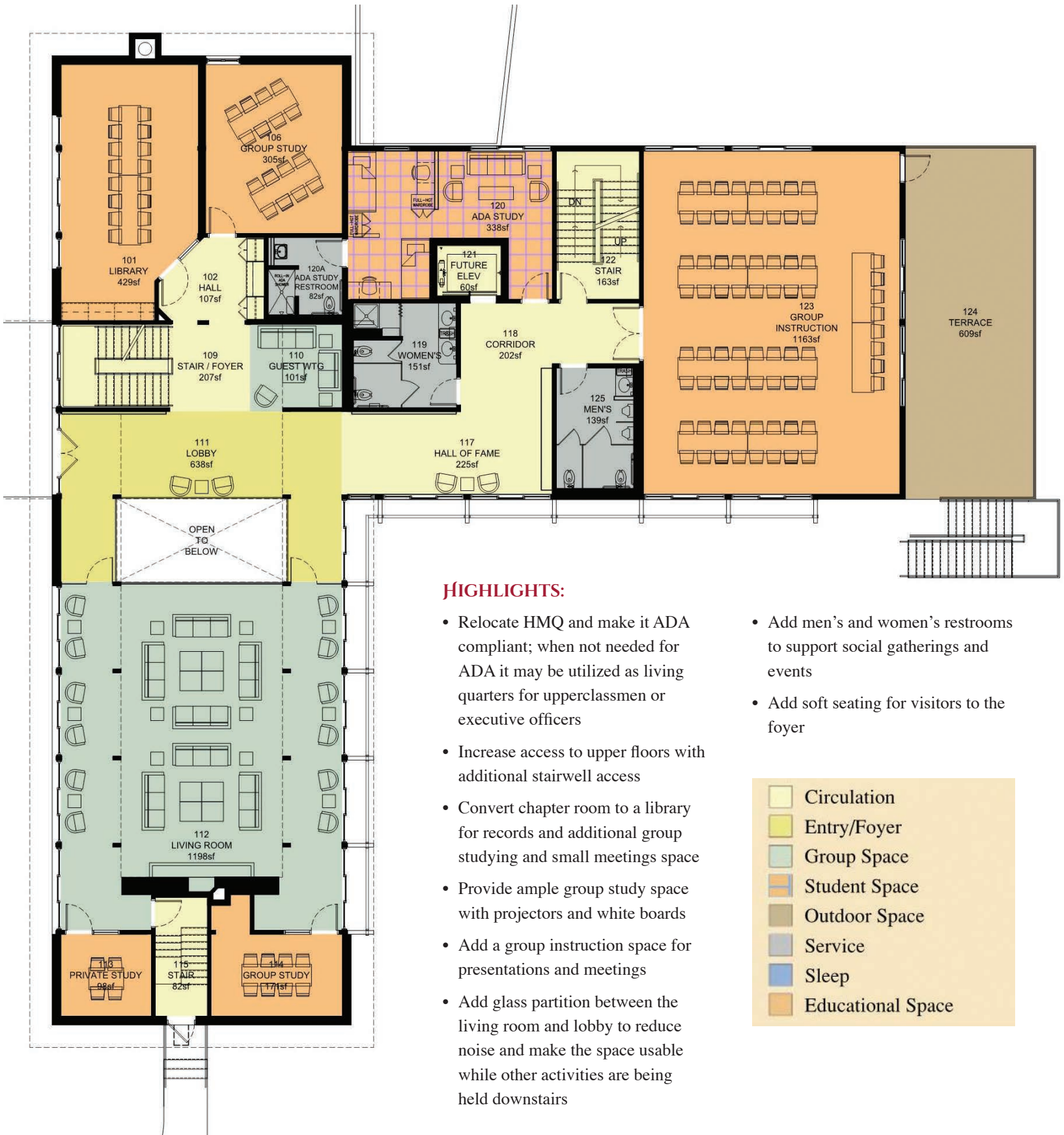
- Replace old heating system with new efficient and zone controlled HVAC
- Replace aging plumbing, electrical, and mechanical systems to accommodate the size of the house
- Make basic site improvements, including paved parking, property lighting, and landscaping for structural durability and aesthetic appeal
- Make improvements for safety including fire, abatement, and infrastructure
- Provide space for future elevator shaft if needed or required by law for ADA

ESTIMATED PROJECT COST

Construction Contracts	\$1,863,000
Soft Costs and Fees	\$328,000
Fixtures and Furnishings	\$251,000
Kitchen Equipment	\$72,000
Construction Contingency	\$184,000
TOTAL	\$2,698,000

All costs, drawings, and project plans are conceptual and will be finalized at the conclusion of the campaign.

MAIN LEVEL



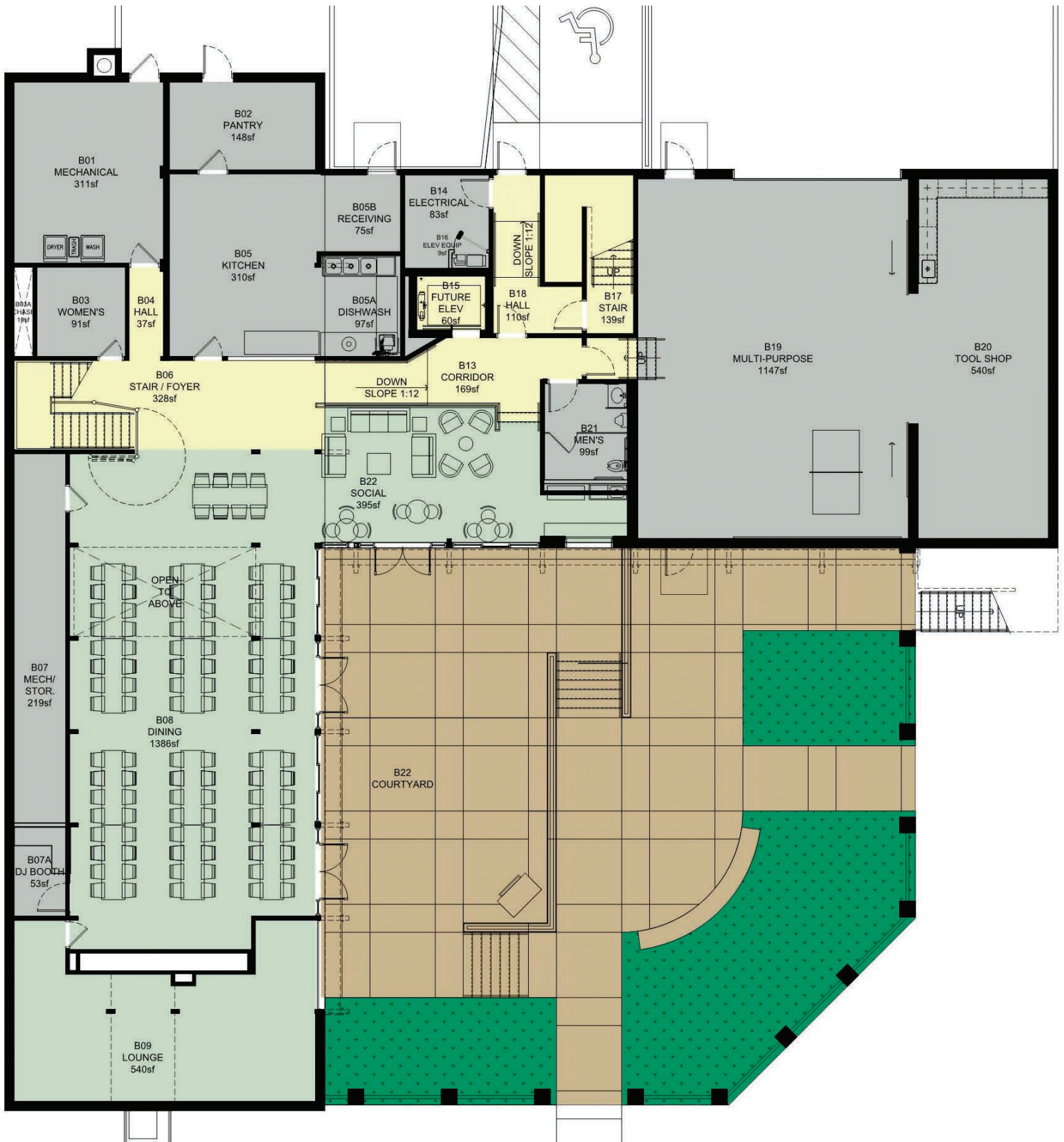
HIGHLIGHTS:

- Relocate HMQ and make it ADA compliant; when not needed for ADA it may be utilized as living quarters for upperclassmen or executive officers
- Increase access to upper floors with additional stairwell access
- Convert chapter room to a library for records and additional group studying and small meetings space
- Provide ample group study space with projectors and white boards
- Add a group instruction space for presentations and meetings
- Add glass partition between the living room and lobby to reduce noise and make the space usable while other activities are being held downstairs
- Add men's and women's restrooms to support social gatherings and events
- Add soft seating for visitors to the foyer

“ As an active member of Beta Sigma Psi, I am very excited to see the development of the chapter house that will act as a home away from home for many future Beta Sigs. The updated chapter house will provide several new amenities such as improved study areas, central AC, and larger areas for social growth, all vital to the growth of the modern fraternity and the development of Christian gentlemen. ”

– Gabe Bonhert '14, Eta Chapter President

BASEMENT

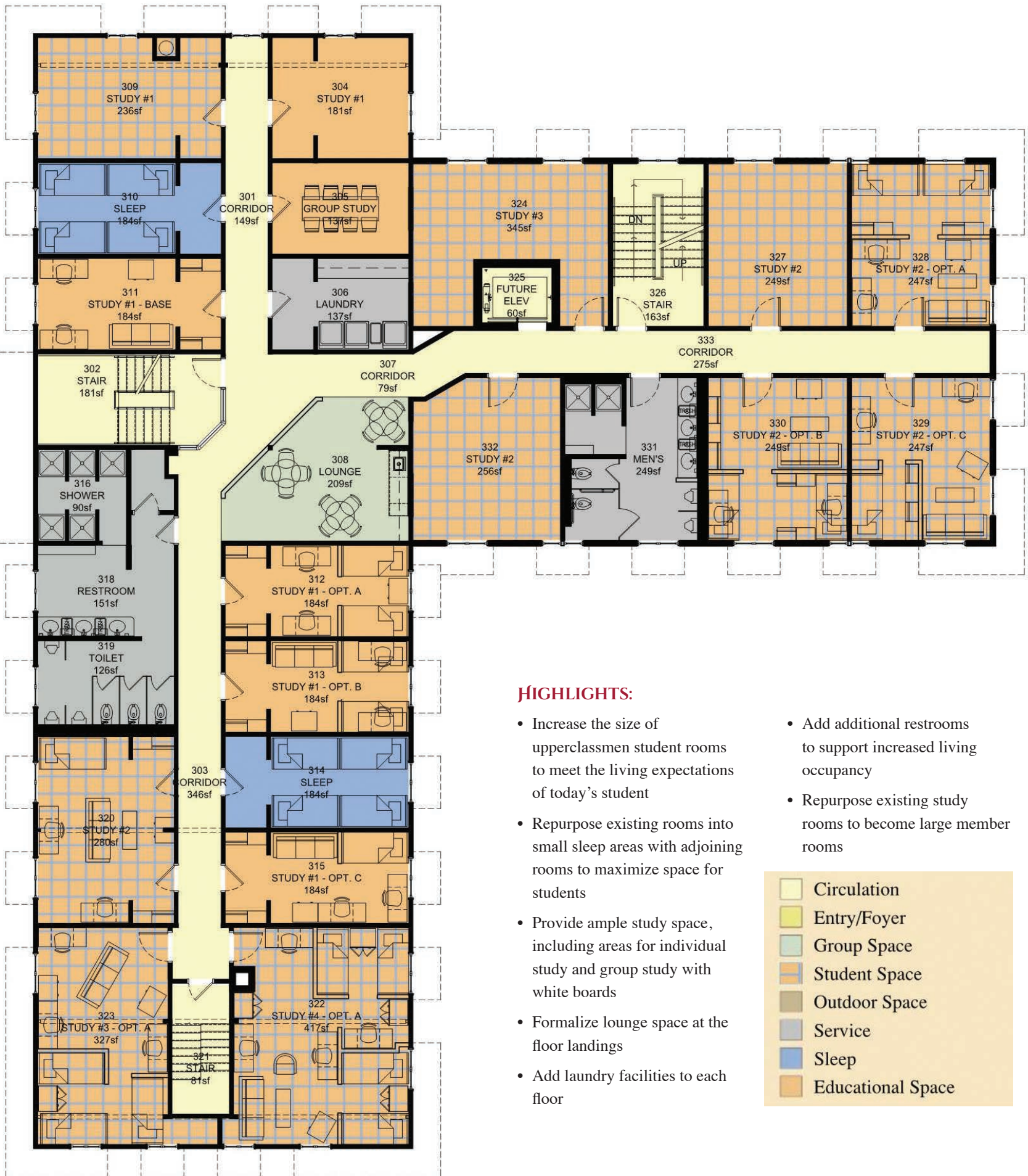


HIGHLIGHTS:

- Replace original sliding glass doors for significant efficiency increases and temperature control
- Add a multi-purpose space for chapter projects, academic projects, and other activities
- Expand the kitchen to add extra space for meal prep and commercial kitchen necessities
- Upgrade kitchen serving area to eliminate the need and space for daily buffet tables
- Replace kitchen equipment and appliances, including casework and cabinet work
- Add a much-needed men's restroom
- Add a tool room to safely store and organize tools
- Expand basement with additional soft seating area that could also be utilized as a game room or gathering space for social events

	Circulation
	Entry/Foyer
	Group Space
	Student Space
	Outdoor Space
	Service
	Sleep
	Educational Space

SECOND AND THIRD FLOORS



HIGHLIGHTS:

- Increase the size of upperclassmen student rooms to meet the living expectations of today's student
- Repurpose existing rooms into small sleep areas with adjoining rooms to maximize space for students
- Provide ample study space, including areas for individual study and group study with white boards
- Formalize lounge space at the floor landings
- Add laundry facilities to each floor
- Add additional restrooms to support increased living occupancy
- Repurpose existing study rooms to become large member rooms

- ◻ Circulation
- ◻ Entry/Foyer
- ◻ Group Space
- ◻ Student Space
- ◻ Outdoor Space
- ◻ Service
- ◻ Sleep
- ◻ Educational Space



Office of the Chancellor

Beta Sigma Psi National Lutheran Fraternity
Eta Chapter
2 Fraternity Drive
Rolla, MO 65401

Dear Alumni of Beta Sigma Psi – Eta Chapter,

My congratulations to Eta Chapter of Beta Sigma Psi on the decision to renovate and expand your home at 2 Fraternity Drive. Whether known as the University of Missouri School of Mines and Metallurgy, the University of Missouri-Rolla, or now Missouri University of Science and Technology, our campus appreciates the leadership Eta undergraduates and alumni have provided for over 65 years. Your alumni have assumed key business, professional, political, and academic positions throughout the nation and have played a crucial role in the continued success of the university.

I am pleased to share that the Greek system is alive and well at Missouri S&T and constitutes 20% of the undergraduate student population. Many fraternities and sororities are planning and carrying out renovations to improve their chapter facilities. These projects can only happen with the support of alumni. The decision to provide an excellent living and social environment with first-rate academic accommodations will enhance the overall university experience for our undergraduates and enhance the collegiate experience that Beta Sigma Psi provides.

I strongly support our fraternities and sororities and look forward to the success of this project. A strong university depends on talented undergraduates and supportive alumni. Your commitment to this capital campaign will help build a legacy for future generations. Best wishes for much continued success.

Warmest regards,

Cheryl B. Schrader, PH.D.
Chancellor

MINERS DIG DEEPER

206 Parker Hall | 300 West 13th Street | Rolla, MO 65409-0910 | P: 573-341-4114 | F: 573-341-6306 | chancellor@mst.edu | mst.edu

GIVING LEVELS

Per Aspera Ad Astra Society
\$200,000 and Above

Founders Society
\$100,000 to \$199,999

Cornerstone Society
\$50,000 to \$99,999

Cross, Heart, & Rose Society
\$25,000 to \$49,999

White & Cardinal Red Society
\$15,000 to \$24,999

Eta Society
\$10,000 to \$14,999

Concordia Club
\$5,000 to \$9,999

Miner Club
\$2,500 to \$4,999

Donor
\$1,000 to \$2,499

GIVING TO OUR LEGACY

Beta Sigma Psi continues to play an important role in shaping the lives of young men. We all enjoyed the brotherhood Eta provided during our time in Rolla. Now, it is our turn to support Eta Chapter and ensure that the same, valuable experience is available to future undergraduates.

Our project requires assistance from all Eta brothers. In maintaining traditions that have benefited the lives of many Eta men over the years, the undergraduate men have made a commitment to work hard and personally pledge to this campaign. We are asking for you to join us with your financial support. Given the importance and magnitude of this project, we are urging all alumni to consider significant contributions to the campaign.

GIVING OPTIONS

In order for each alumnus to maximize his participation, gifts may be made in lump sum payments or spread over a five-year period. Early support of the campaign is encouraged to help reduce borrowing costs. In-kind gifts will be accepted on an individual basis upon approval of the Campaign Board and Building Committee. Gifts of securities are also accepted and offer significant tax advantages to the donor. For professional advice, please consult your tax advisor.

RECOGNITION

All donors contributing \$1,000 or more to the campaign will be recognized in campaign publications, unless otherwise requested. All donors contributing \$2,500 and above will be recognized on a prominently displayed plaque in the chapter house. Gifts in honor or in memory of brothers, as well as family and pledge class contributions, are welcomed.

TAX DEDUCTIBILITY

The Rolla Alumni Chapter of Beta Sigma Psi and Rolla Chapter of Beta Sigma Psi Charitable Foundation have worked together to maximize the portion of this project qualifying as educational space for the IRS. However, significant parts of the chapter house do not qualify as educational, thus those expenses are not tax deductible. For further information regarding tax deductibility, please contact our Campaign Coordinator at (785) 843-1661.

JOIN US IN MAKING YOUR PLEDGE TODAY

Return the pledge form to confirm your commitment. With your support, Beta Sigma Psi will continue to provide an exceptional experience that supports, nurtures, and develops outstanding young men with the skills and confidence to face an ever-changing world. Our investment in the future of Eta will ensure the success of our Chapter and promote a legacy upon which to build an even greater brotherhood. Thank you for your consideration of our plan.

CAMPAIGN BOARD

Campaign Co-Chairman
Gerry Wiegmann '71

Campaign Co-Chairman
Rusty Goldammer '75

Keith Konradi '69 **Steve Lampe '76**
Guy Freese '72 **Chuck Skouby '80**
David Shafer '72 **John Komlos '82**
Art Giesler '74 **James Klotz '95**
Erik Burgdorf '76 **Trevor Bollmann '06**

ALUMNI BOARD

President
Nathan Leezer '10

Treasurer
Art Giesler '74

House Manager
Austin Crisafulli '08

Alumni Relations Director
Kyle Pfitzinger '09

Member-at-Large
Robert Givens '08

Scholarship Director
Paul Schmidt '09

Social Director
Stan Fowler '10

BUILDING COMMITTEE

Building Committee Chairman
John Heibreder '74

Kenneth Harms '65
Dave Driemeier '73

Michael Krueger '73

John Komlos '82

Lee Hanhel '91

Stan Fowler '10

ΒΣΨ